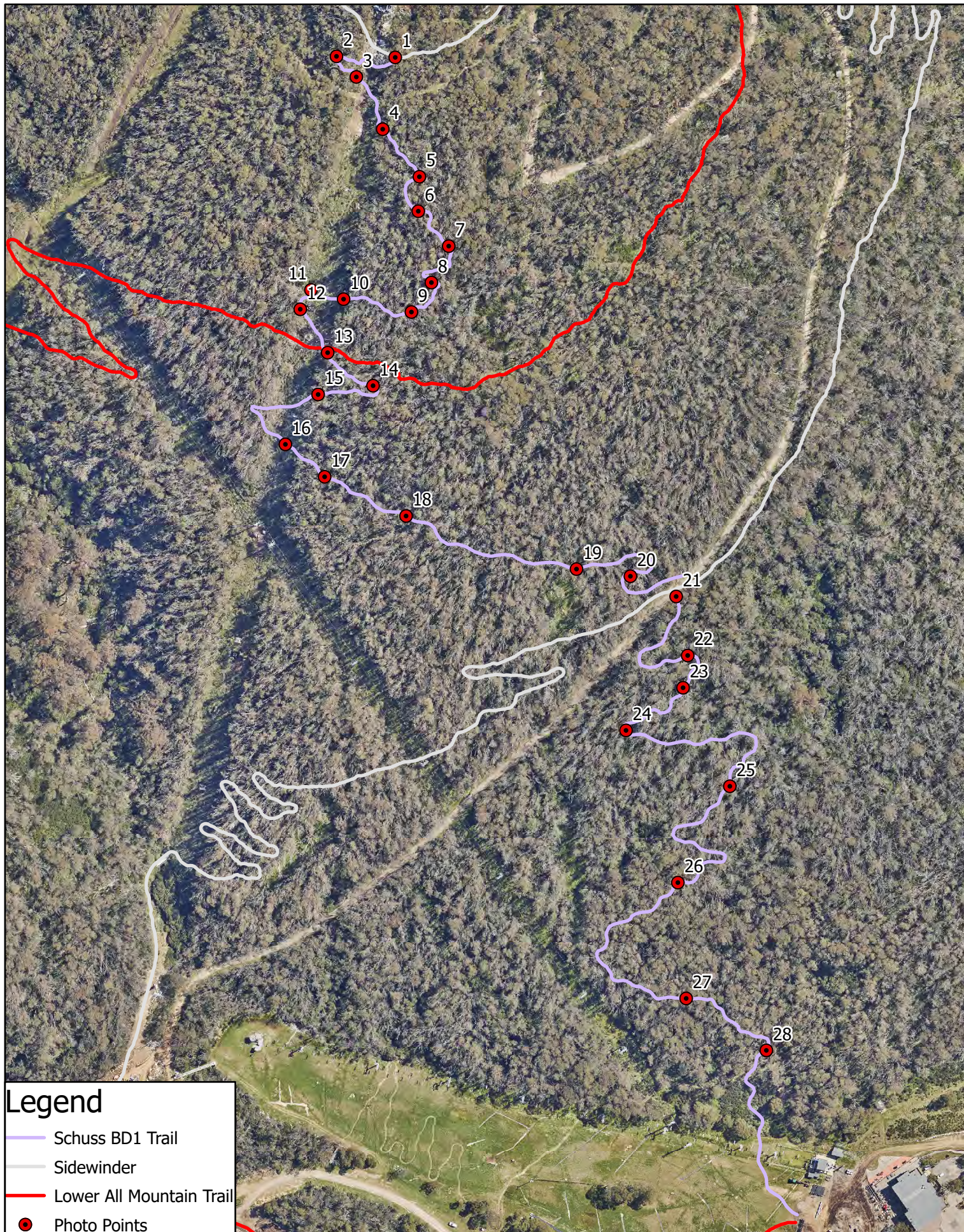


Trail Description and Photo Reference Points – Schuss Advanced Mountain Bike Trails



Legend

- Schuss BD1 Trail
- Sidewinder
- Lower All Mountain Trail
- Photo Points

Scale: 1:3,109
2010 0 20 40 60 80
Meters

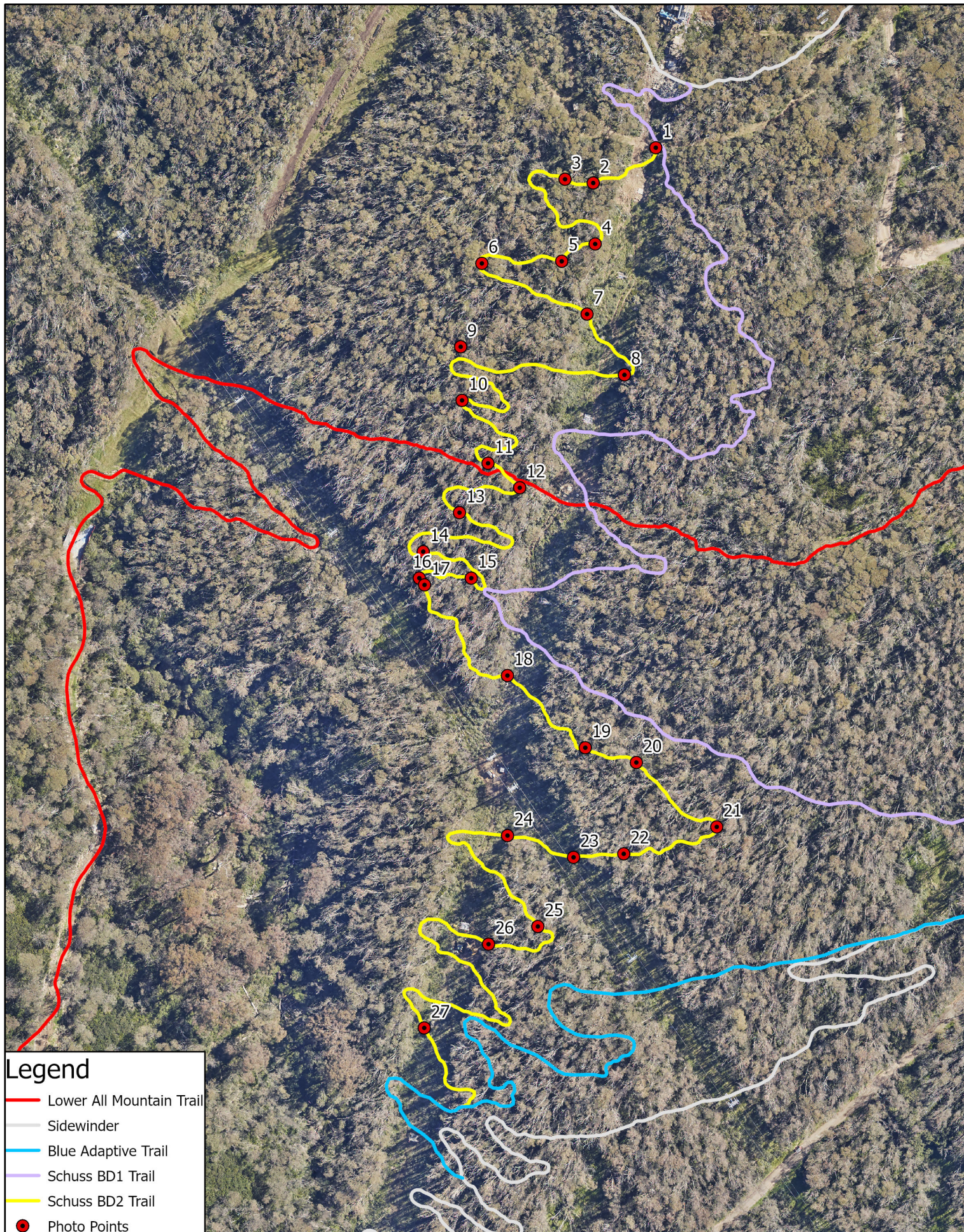
Map Projection: Universal
Transverse Mercator
Horizontal Datum: GDA 1994
Grid: GDA 1994 MGA Zone 55



PHOTO POINTS

Project: Proposed
Schuss BD1 MTB Trail

Revision: 3
Date: 29/07/2024
Produced By: BB






Legend

- Lower All Mountain Trail
- Sidewinder
- Blue Adaptive Trail
- Schuss BD1 Trail
- Schuss BD2 Trail
- Photo Points

<p>Scale: 1:2,159</p> <p>105 0 10 20 30 40</p> <p> Meters</p> <p>Map Projection: Universal Transverse Mercator</p> <p>Horizontal Datum: GDA 1994</p> <p>Grid: GDA 1994 MGA Zone 55</p>	<p>N</p> <p></p> <p></p>	<p>PHOTO POINTS</p> <p>Project: Proposed Schuss BD2 MTB Trail</p>	<p>Revision: 2</p> <p>Date: 21/03/2024</p> <p>Produced By: BB</p>
--	--------------------------	--	---

BD1 – Trail Description and Photo References


BD 1 Photo Point ID / Description	Photo
<p>BD1_P1: The trail head is located off the Sidewinder trail, below the top station of the Merritts Gondola.</p>	
<p>BD1_P2: The trail traverses the native vegetation into a berm.</p>	
<p>BD1_P3: The trail follows the contours across the Gondola lift corridor.</p>	

<p>BD 1</p> <p>Photo Point ID / Description</p>	<p>Photo</p>
<p>BD1_P4: The trail continues into the native vegetation.</p>	
<p>BD1_P5: The traverses the native vegetation through the trees into a berm.</p>	
<p>BD1_P6: The trail continues downhill. Natural rock feature pictured which creates a more interesting ride.</p>	




<p>BD 1</p> <p>Photo Point ID / Description</p>	<p>Photo</p>
<p>BD1_P7: The trail continues through the vegetation.</p>	
<p>BD1_P8: The trail continues downhill with a series of tighter turns.</p>	
<p>BD1_P9: The trail continues through gaps in the trees.</p>	




<p>BD 1</p> <p>Photo Point ID / Description</p>	<p>Photo</p>
<p>BD1_P10: The trail departs the undisturbed vegetation and heads back into the Gondola lift corridor.</p>	
<p>BD1_P11: The continues downhill within the Gondola corridor.</p>	
<p>BD1_P12: The trail heads into a berm.</p>	



<p>BD 1</p> <p>Photo Point ID / Description</p>	<p>Photo</p>
<p>BD1_P13: The trail heads back into the vegetation through the gaps in the trees.</p>	
<p>BD1_P14: The trail heads into a berm within a relatively open area amongst the trees.</p>	
<p>BD1_P15: The trail departs the vegetation back onto the Gondola lift corridor.</p>	

<p>BD 1</p> <p>Photo Point ID / Description</p>	<p>Photo</p>
<p>BD1_P16: The trail departs the Gondola corridor back into the vegetation.</p>	
<p>BD1_P17: The trail continues downslope following the contours.</p>	
<p>BD1_P18: The trail continues through the vegetation.</p>	




<p>BD 1</p> <p>Photo Point ID / Description</p>	<p>Photo</p>
<p>BD1_P19: The trail continues toward the mountain access road through an open section between the trees.</p>	
<p>BD2_P20: The trail enters into a berm before crossing the mountain access road and Sidewinder trail.</p>	
<p>BD1_P21: The trail departs the mountain access road into the vegetation.</p>	


BD 1 Photo Point ID / Description	Photo
<p>BD2_P22: The trail traverses the vegetation adjacent to the mountain access road and heads east into a berm.</p>	
<p>BD1_P23: The trail continues through the vegetation.</p>	
<p>BD1_P24: The trail heads west towards the mountain access road into a berm, then heads east following the contours into another berm.</p>	


<p>BD 1</p> <p>Photo Point ID / Description</p>	<p>Photo</p>
<p>BD1_P25: The trail descends south-southwest.</p>	
<p>BD1_P26: The trail continues south-west through the vegetation towards the Gunbarrel chairlift corridor.</p>	
<p>BD1_P27: The trail departs from the edge of the Gunbarrel chairlift corridor, following the contours towards the east.</p>	

<p>BD 1</p> <p>Photo Point ID / Description</p>	<p>Photo</p>
<p>BD1_P28: The trail continues through relatively open vegetation.</p>	
<p>BD1_P29: The trail traverses the vegetation through a series of shorter turns toward the Friday Flat ski area where the trail terminates.</p>	

BD2 – Trail Description and Photo References

BD 2 Photo Point ID / Description	Photo
<p>BD2_P1: The trail head commences off the BD1 trail below the Merritts Gondola top station.</p>	
<p>BD2_P2: The trail follows the contours through relatively open vegetation.</p>	
<p>BD2_P3: The trail continues west into a berm within relatively open vegetation, then descends south-east into another berm on the edge of the Merritts Gondola lift line.</p>	


<p>BD 2</p> <p>Photo Point ID / Description</p>	<p>Photo</p>
<p>BD2_P4: The trail departs the berm on the edge of the Merritts Gondola lift line and heads west into the vegetation.</p>	
<p>BD2_P5: The trail continues through the vegetation.</p>	
<p>BD2_P6: The trail departs the berm, following the contours towards the Merritts Gondola lift line.</p>	

<p>BD 2</p> <p>Photo Point ID / Description</p>	<p>Photo</p>
<p>BD2_P7: The trail follows the contours across the Merritts Gondola lift line into a berm on the edge of the vegetation.</p>	
<p>BD2_P8: The trail departs the berm on the edge of the lift line, heading west along the contours of the slope.</p>	
<p>BD2_P9: The trail continues through the trees into a berm.</p>	

BD 2 Photo Point ID / Description	Photo
<p>BD2_P10: The trail enters a series of tighter switchbacks following the contours of the slope.</p>	
<p>BD2_P11: The trail crosses the Lower All-Mountain (LAM) trail and continues into a series of switchbacks following the contours of the slope.</p>	
<p>BD2_P12: The trail enters a berm below the LAM trail.</p>	

<p>BD 2</p> <p>Photo Point ID / Description</p>	<p>Photo</p>
<p>BD2_P13: The trail departs a berm heading southwest into another berm.</p>	
<p>BD2_P14: The trail continues through the vegetation following the contours of the slope.</p>	
<p>BD2_P15: The trail continues along the contours of the slope towards the Gunbarrel lift line.</p>	

<p>BD 2</p> <p>Photo Point ID / Description</p>	<p>Photo</p>
<p>BD2_P16: The trail descends through the vegetation adjacent to the Gunbarrel lift line.</p>	
<p>BD2_P17: The trail continues to descend down the edge of Gunbarrel lift line.</p>	
<p>BD2_P18: The trail crosses the Merritts Gondola lift line following the contours of the slope.</p>	

<p>BD 2</p> <p>Photo Point ID / Description</p>	<p>Photo</p>
<p>BD2_P19: The trail continues into the vegetation following the contours of the slope.</p>	
<p>BD2_P20: The trail continues east along the contours of the slope.</p>	
<p>BD2_P21: The trail continues into a berm before heading west back towards the Gunbarrel lift line.</p>	

<p>BD 2</p> <p>Photo Point ID / Description</p>	<p>Photo</p>
<p>BD2_P22: The trail follows the contours of the slope through relatively open vegetation.</p>	
<p>BD2_P23: The trail traverses the Gunbarrel lift line.</p>	
<p>BD2_P24: The trail crosses onto the Merritts Gondola lift line into a berm on the edge of the cleared corridor, then follows the contours back toward the Gunbarrel lift line.</p>	

<p>BD 2</p> <p>Photo Point ID / Description</p>	<p>Photo</p>
<p>BD2_P25: The trail heads into berm adjacent to the Gunbarrel lift line.</p>	
<p>BD2_P26: The trail follows the contours towards the Merritts Gondola lift line, then descends the slope through a series of switchback across the cleared corridor.</p>	
<p>BD2_P27: The trail traverses the Merritts Gondola lift line, and terminates when it joins onto the proposed Merritts Intermediate trail (subject to separate approvals) for a short section, then onto the Sidewinder trail towards the Merritts Gondola mid station.</p>	